

- Poumons :

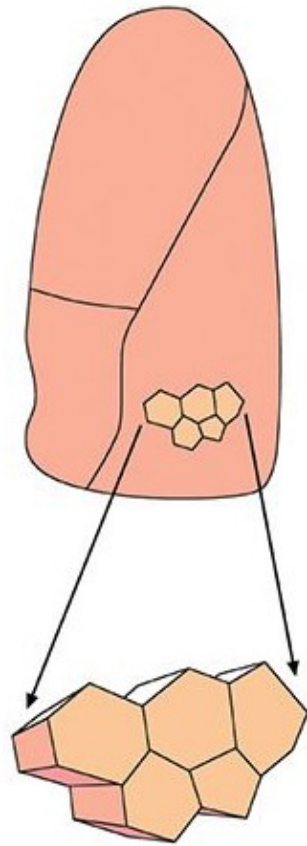
- Voies respiratoires supérieures : p 803-805
- Cavités pulmonaires, pleurales, plèvres : p. 157-161
- Arbre bronchique : p 167-168
- Le poumon : lobes, segments et lobules ; hile et racine pulmonaire : p. 162-166
- Vascularisation pulmonaire et bronchique : p. 169-170
- Innervation et drainage lymphatique : pp. 171-172
- Mécanique ventilatoire : p. 157-15

- Cœur :

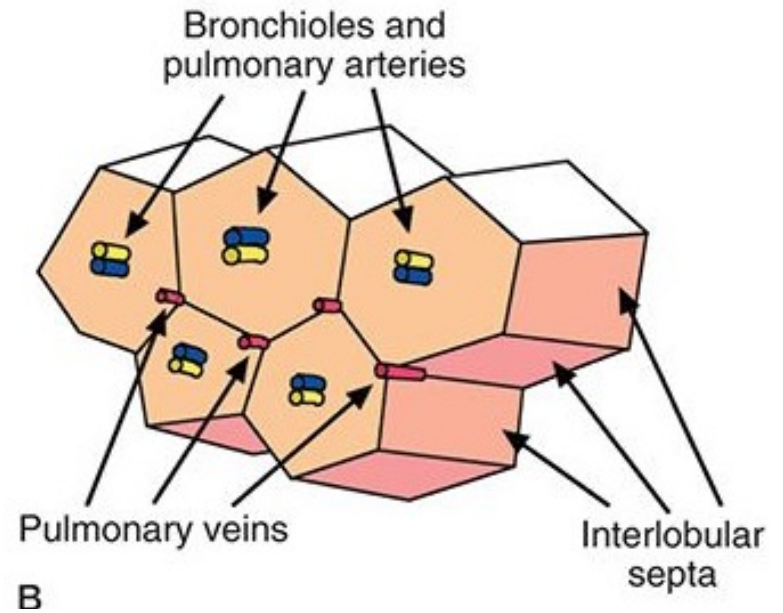
- Situation dans le médiastin moyen : p. 176-177
- Péricarde : p. 173-178
- Morphologie externe : p. 179-183
- Morphologie interne : p. 184-191
- Vascularisation du cœur : p. 192-195, 198-199
- Système cardionecteur : p. 199-201
- Innervation extrinsèque du cœur : p. 201-202



Lobules pulmonaires



Pulmonary lobules

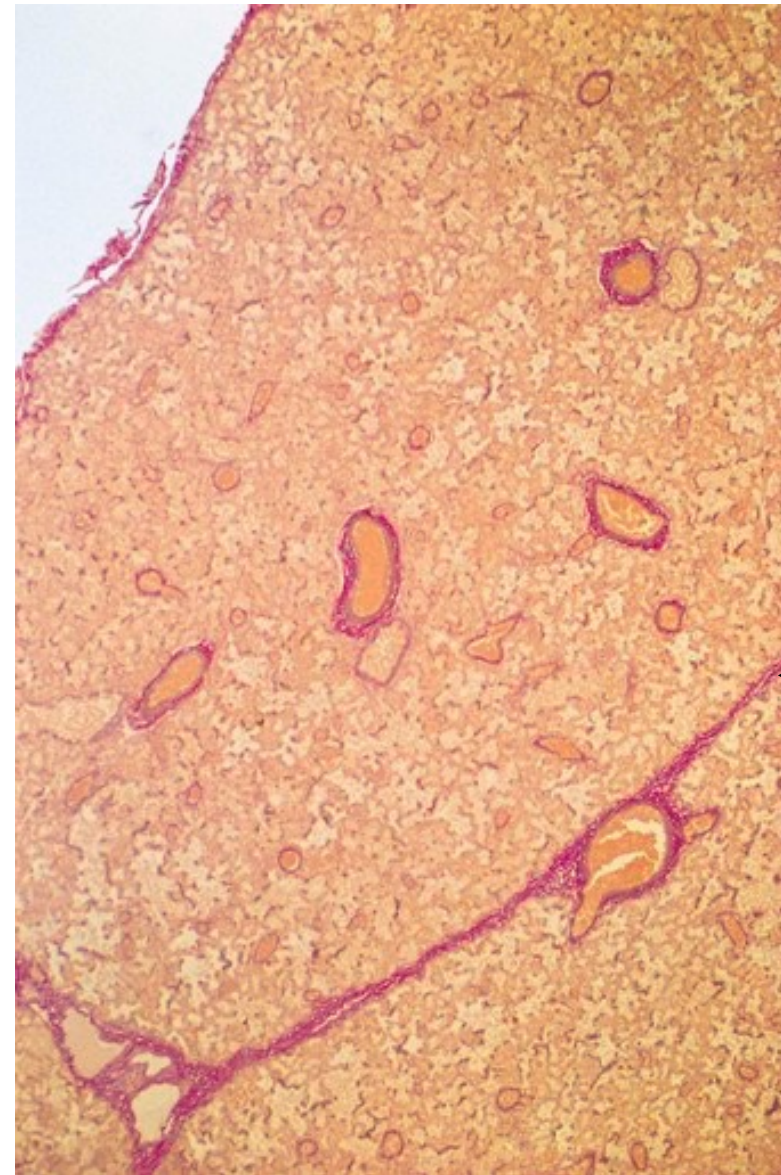


A

B

FIGURE 2-9 Pulmonary lobular anatomy. **A** and **B**: Pulmonary lobules that are irregularly polyhedral or conical in shape are often visible on the surface of the lung, as shown in this diagram of five lobules visible on the posterior surface of the right lung. **B**: Lobules are supplied by small bronchiolar and pulmonary artery branches, which are central in location. They are variably margined by connective tissue interlobular septa that contain pulmonary vein and lymphatic branches. (Specimen photograph courtesy of Martha Warnock, MD.)

Les lobules sont entourés d'un **septum conjonctif**.



élastine

Septum
interlobulaire

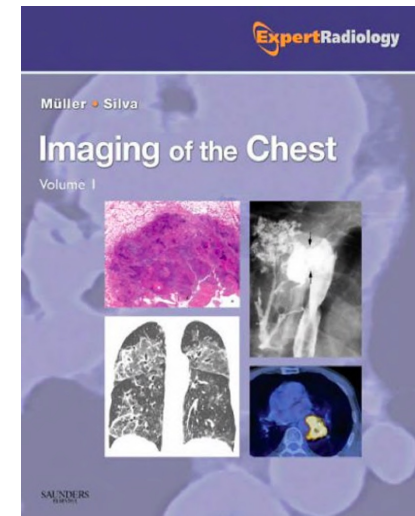


■ **FIGURE 2-29** Normal pulmonary lobule.

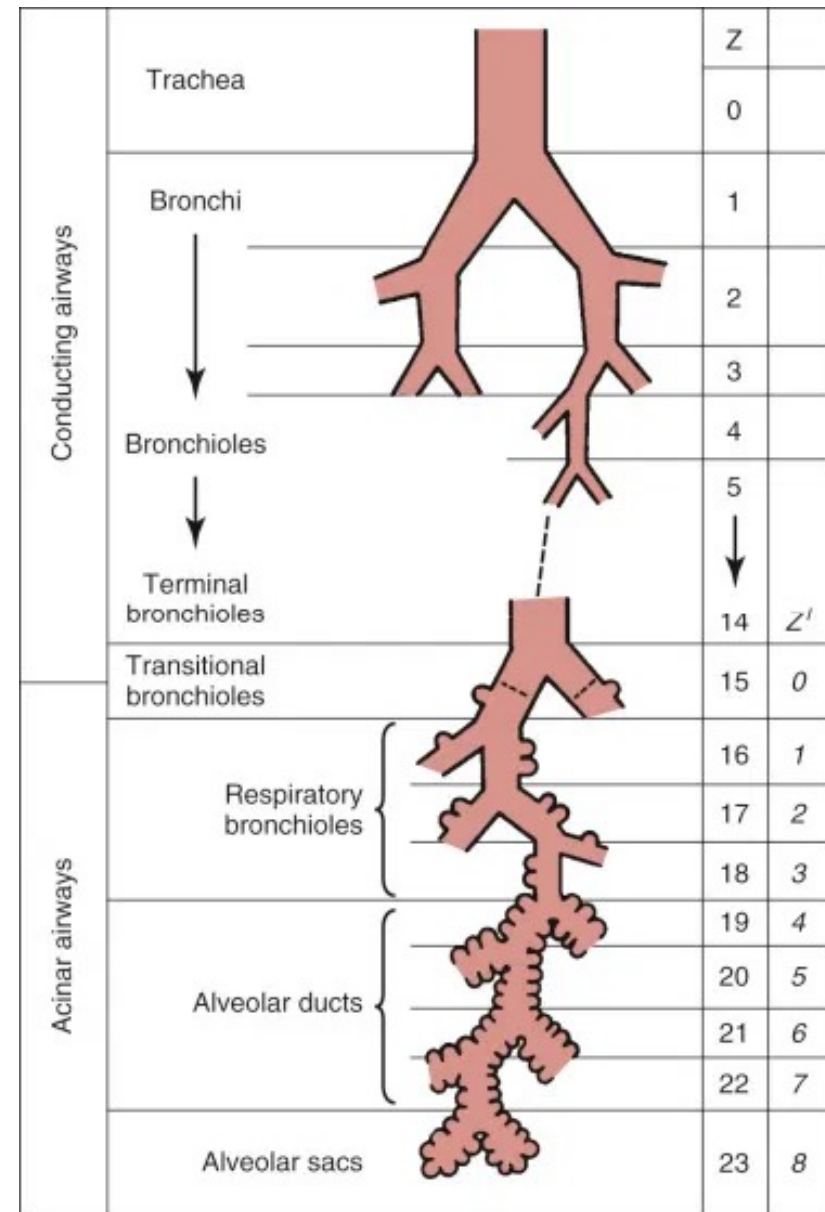
Lung specimen shows secondary lobule surrounded by **connective tissue septa** (*arrowheads*).

The lobular bronchiole and pulmonary artery (*curved arrow*) are located in the center of the lobule, and the draining pulmonary veins (*straight arrows*) are located in the interlobular septa.

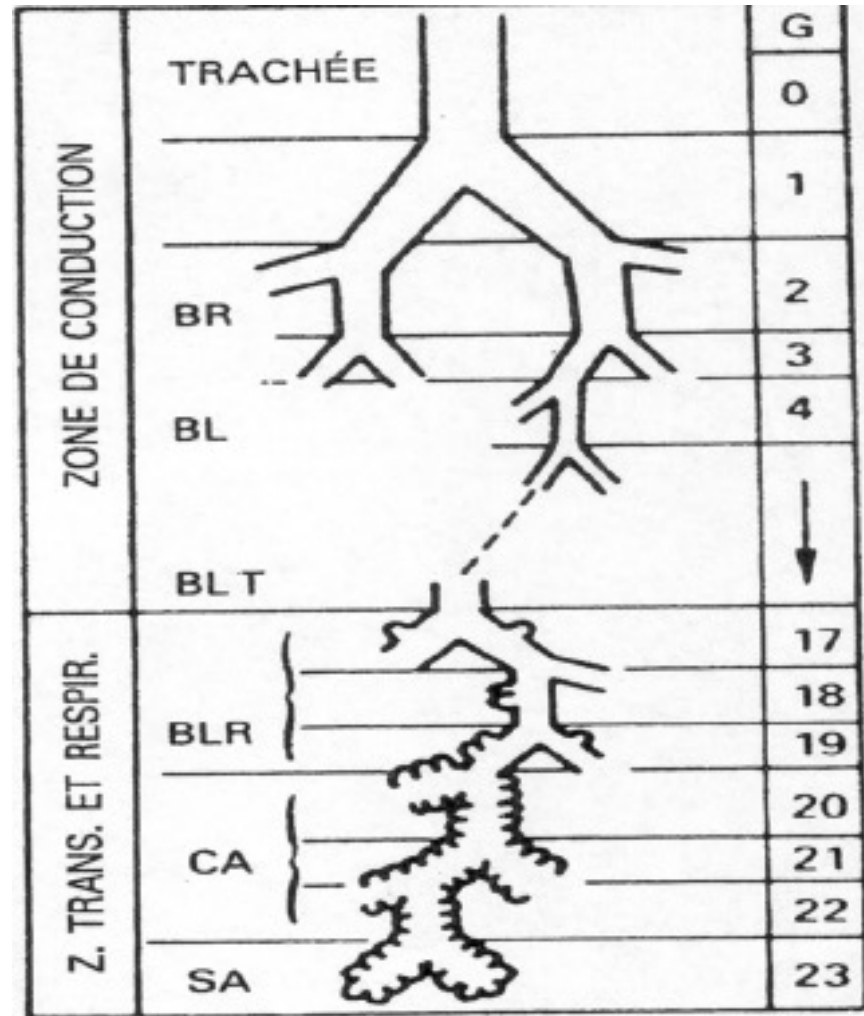
(Courtesy of Dr. Reynaldo T. Rodrigues, Federal University of Sao Paulo, Sao Paulo, Brazil.)



Les générations bronchiques



23 générations



G = génération

Trachée = génération zéro

BR = bronche

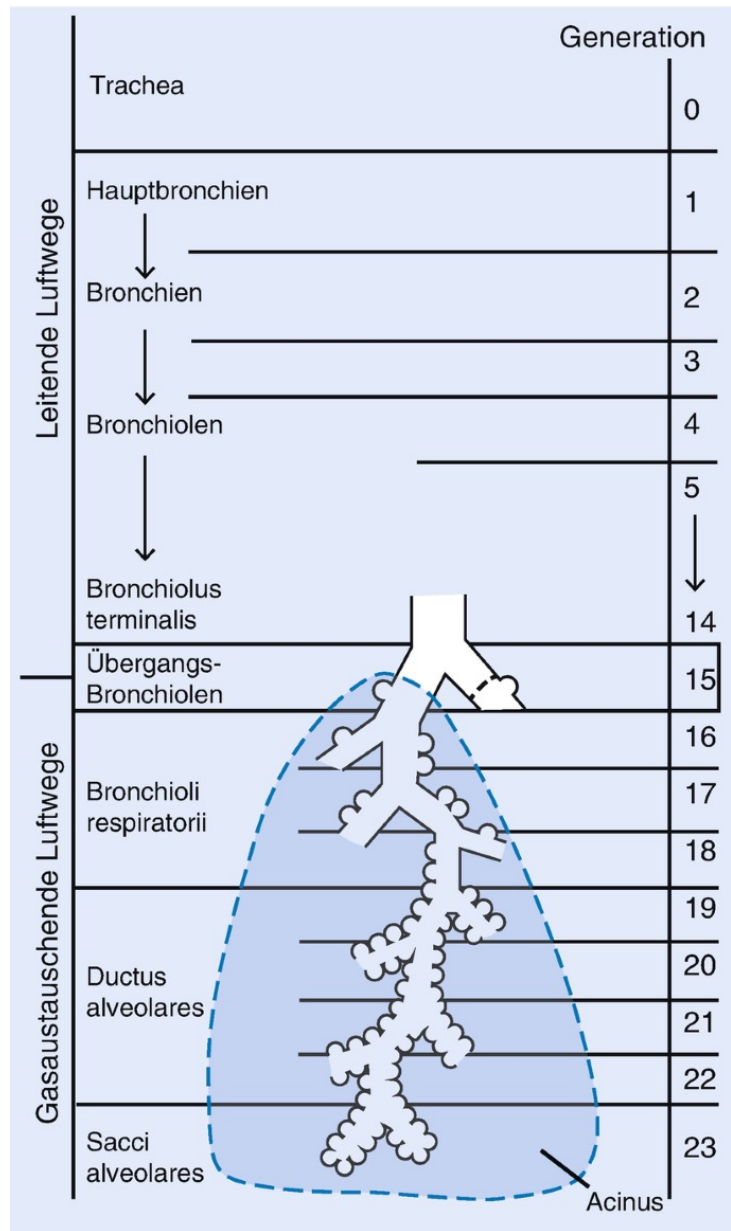
BL = bronchiole

BLT = bronchiole terminale

BLR = bronchiole respiratoire

CA = conduit alvéolaire

SA = sac alvéolaire



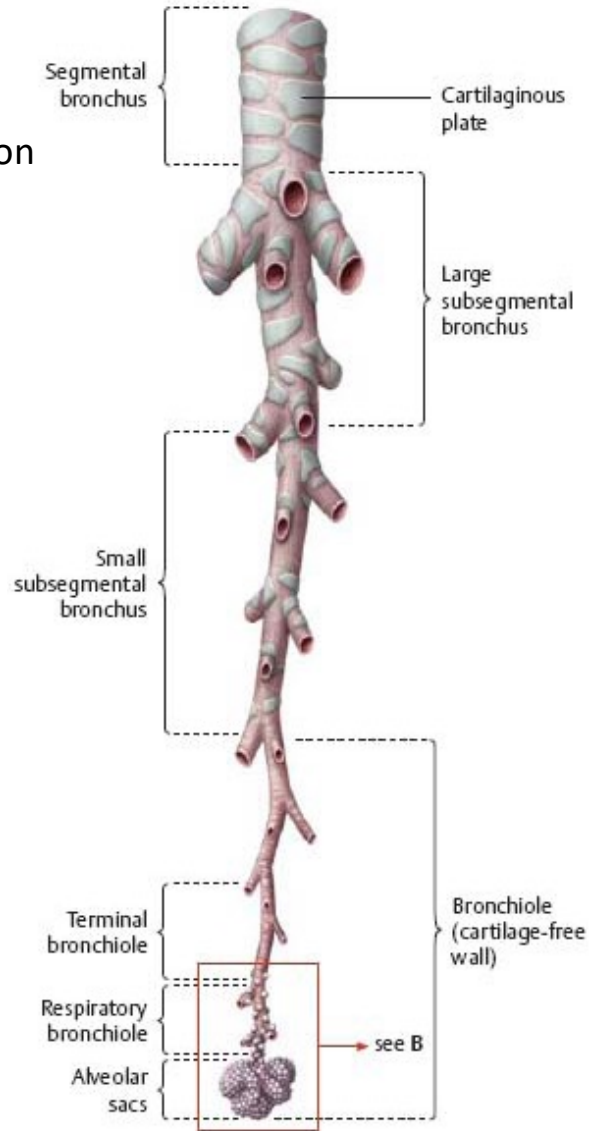
bronche principale = bronche souche

bronche lobaire

bronche segmentaire

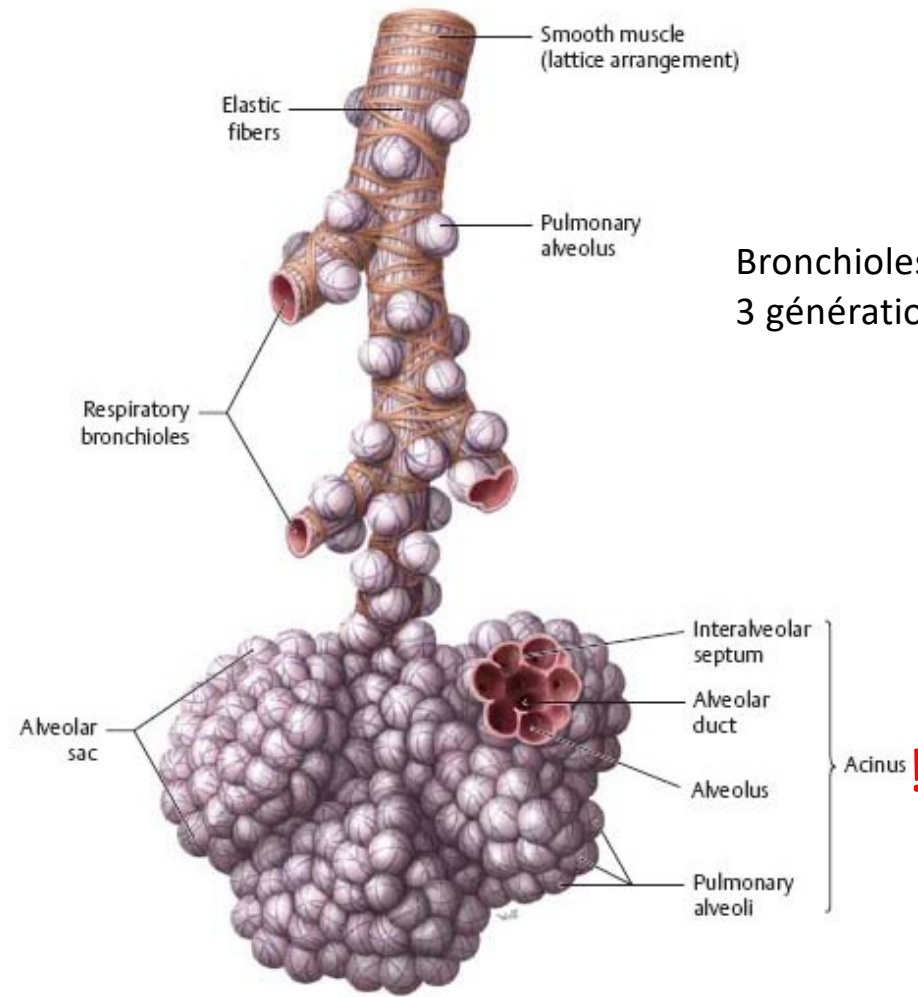
Cartilage présent jusqu'à la 8^{ème} génération

Bronche
Segmentaire
3^{ème} génération



A Divisions of the bronchial tree.

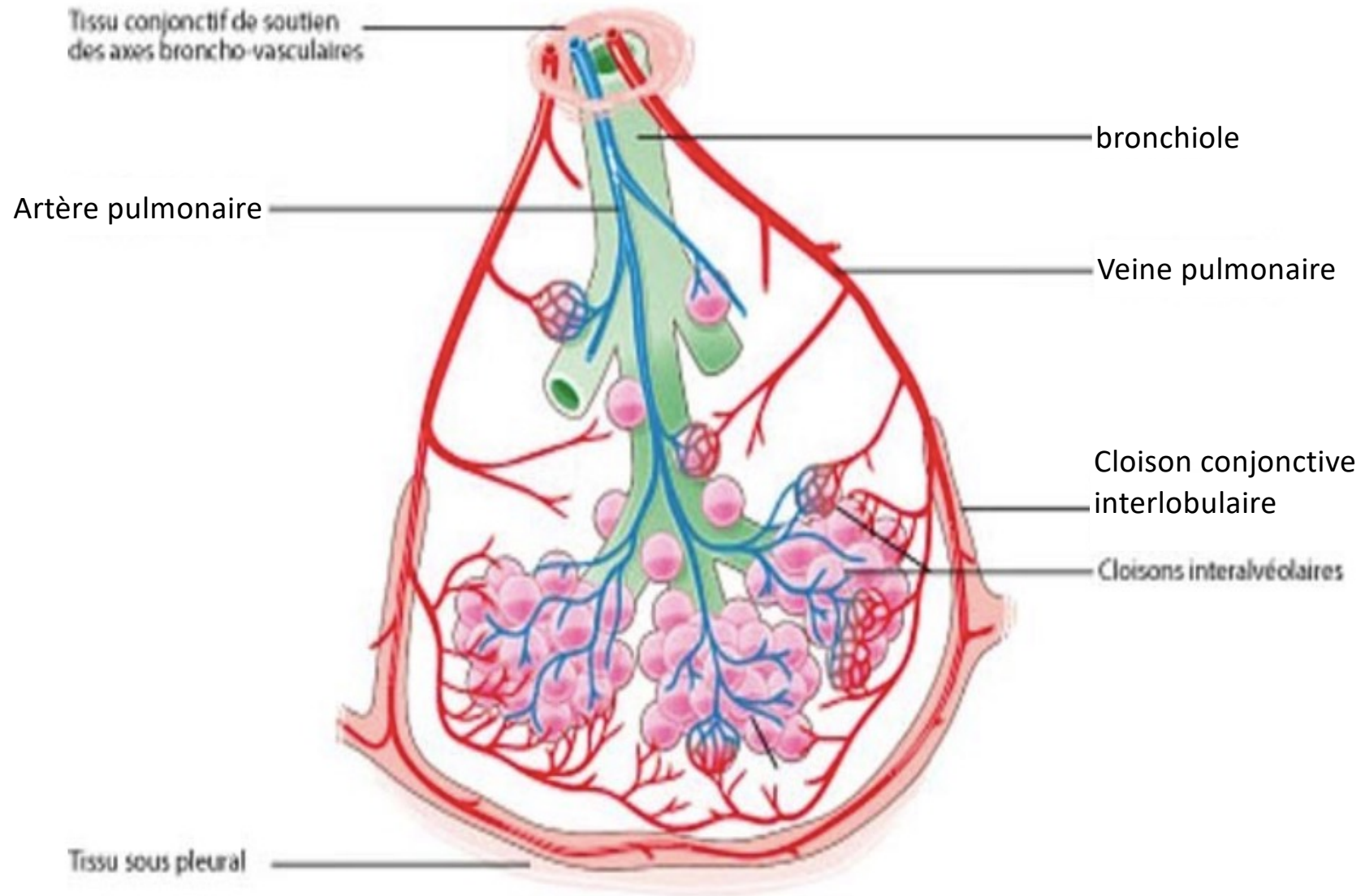
8^{ème} génération



B Respiratory portion of the bronchial tree.

Bronchioles respiratoires:
3 générations

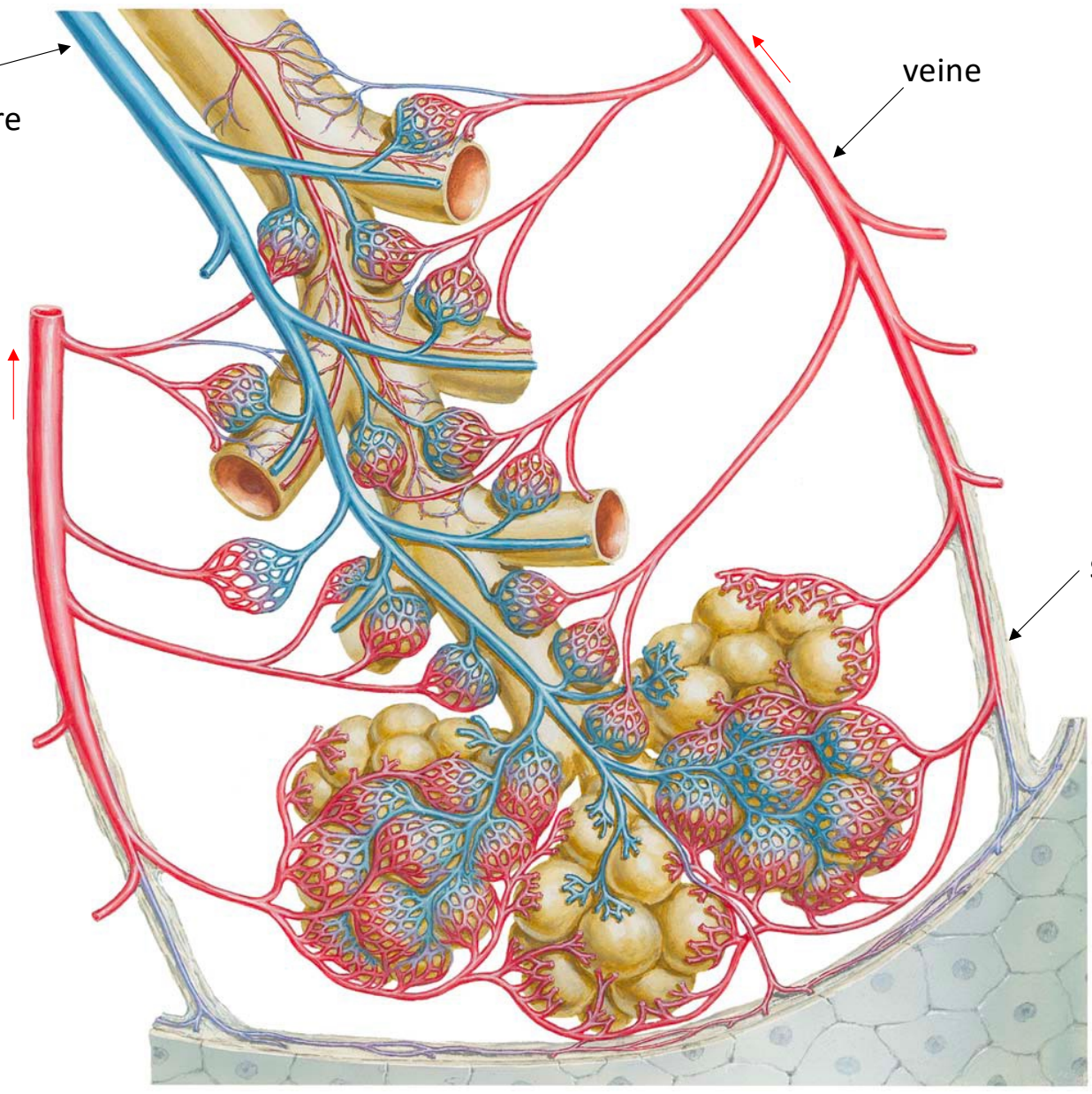
Lobule pulmonaire (dit de Miller)

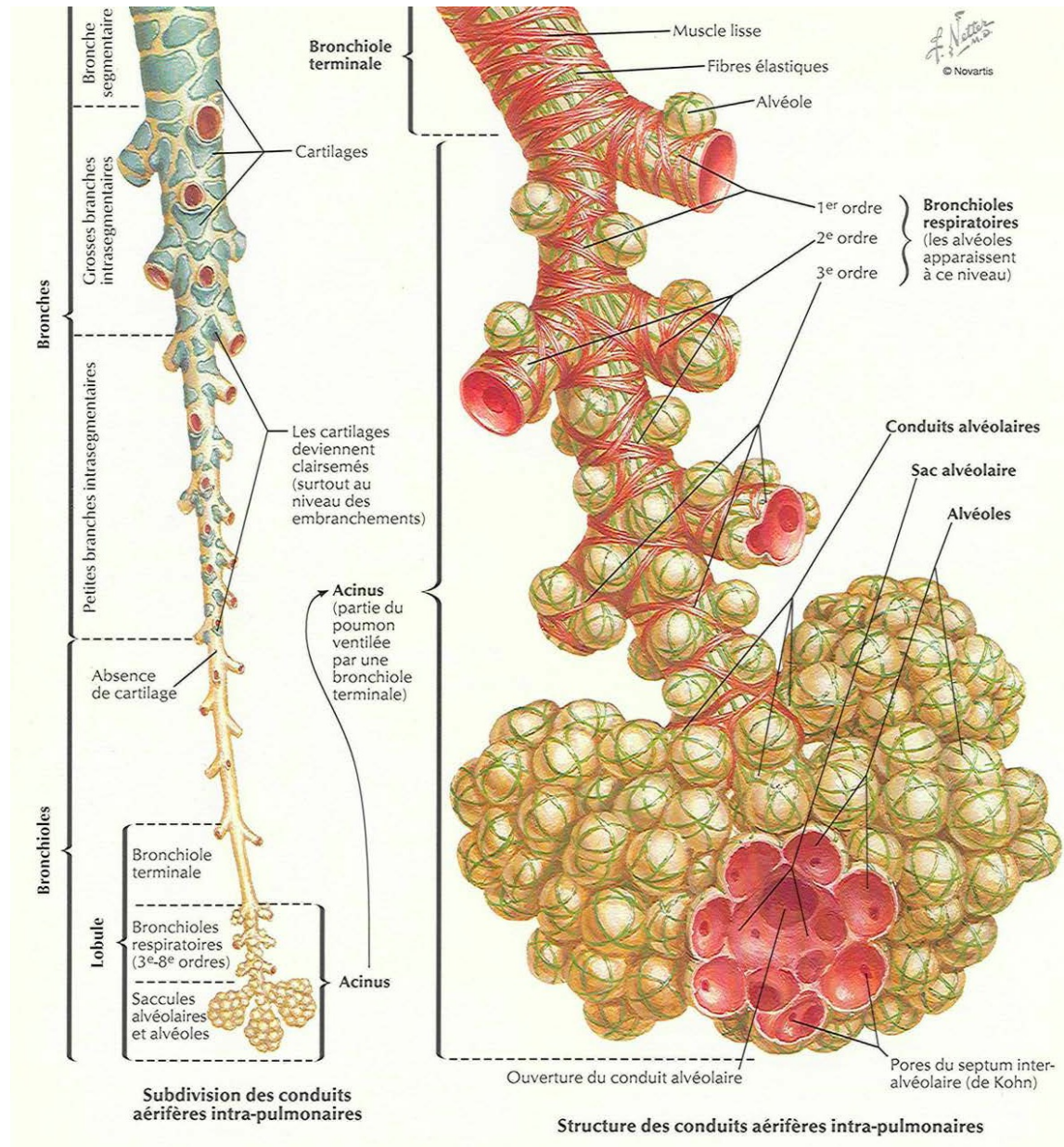
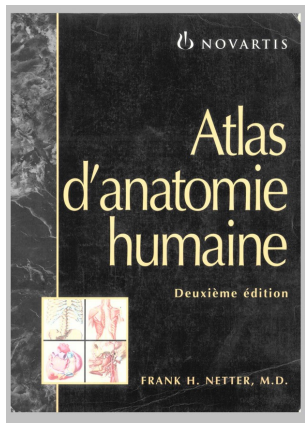


Branche d'une artère pulmonaire

veine

septum (tissu conjonctif)



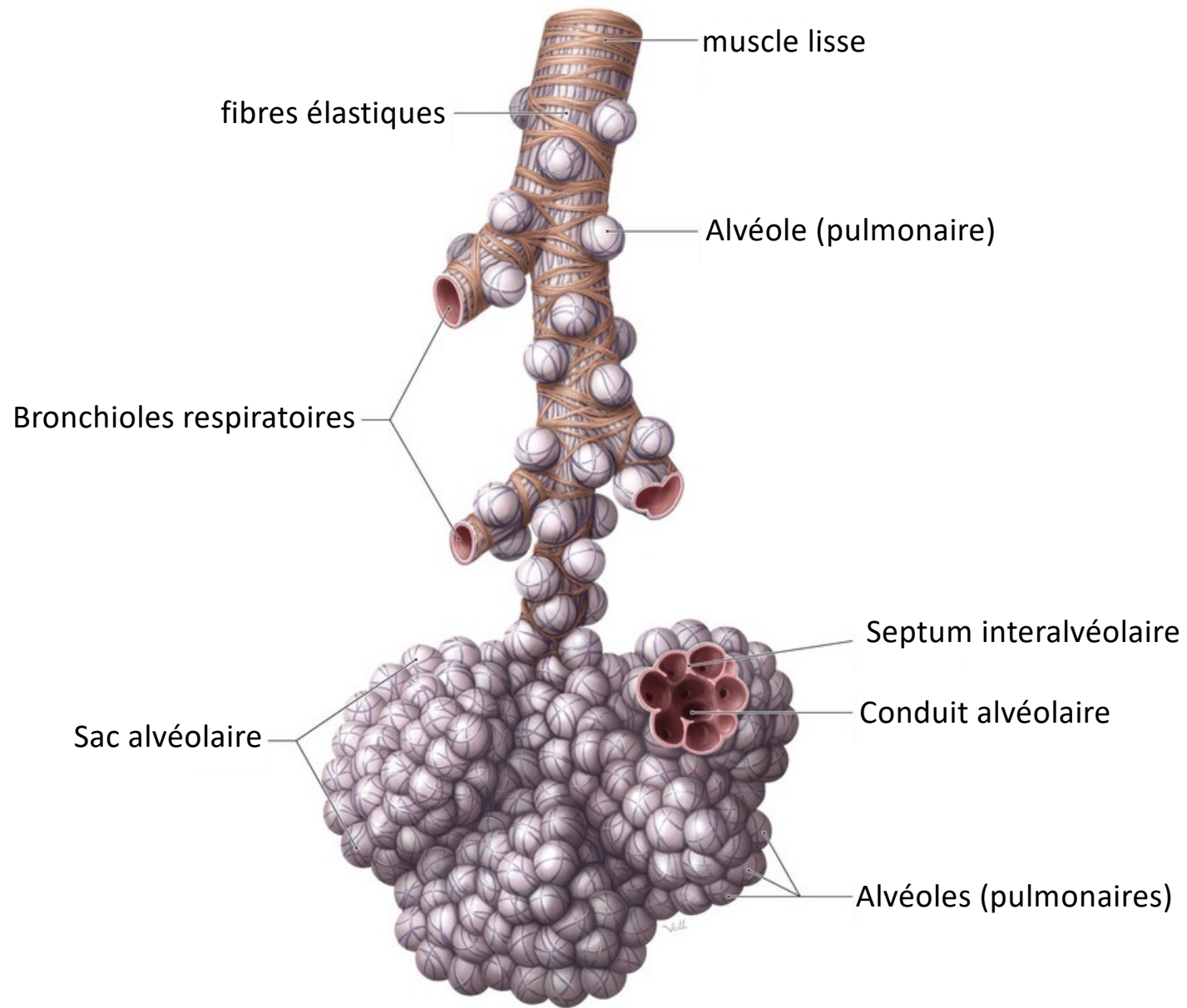


Génération :

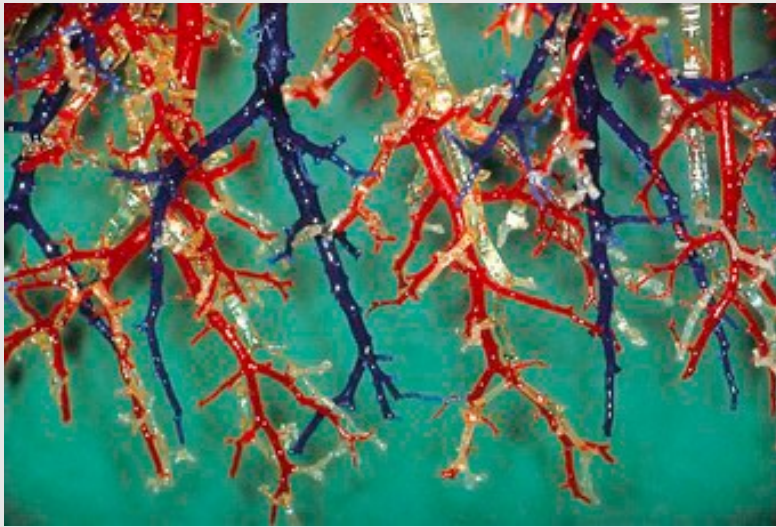
17^{ème}

18^{ème}

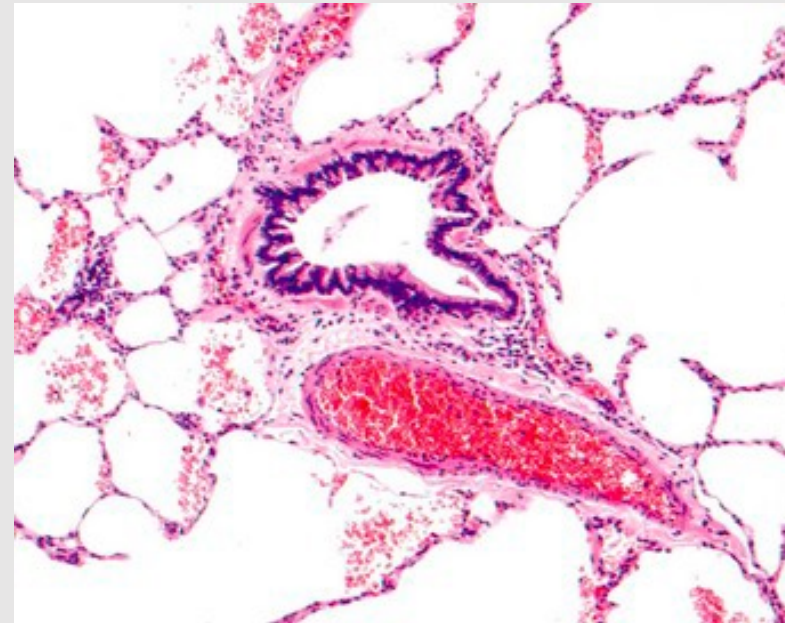
19^{ème}

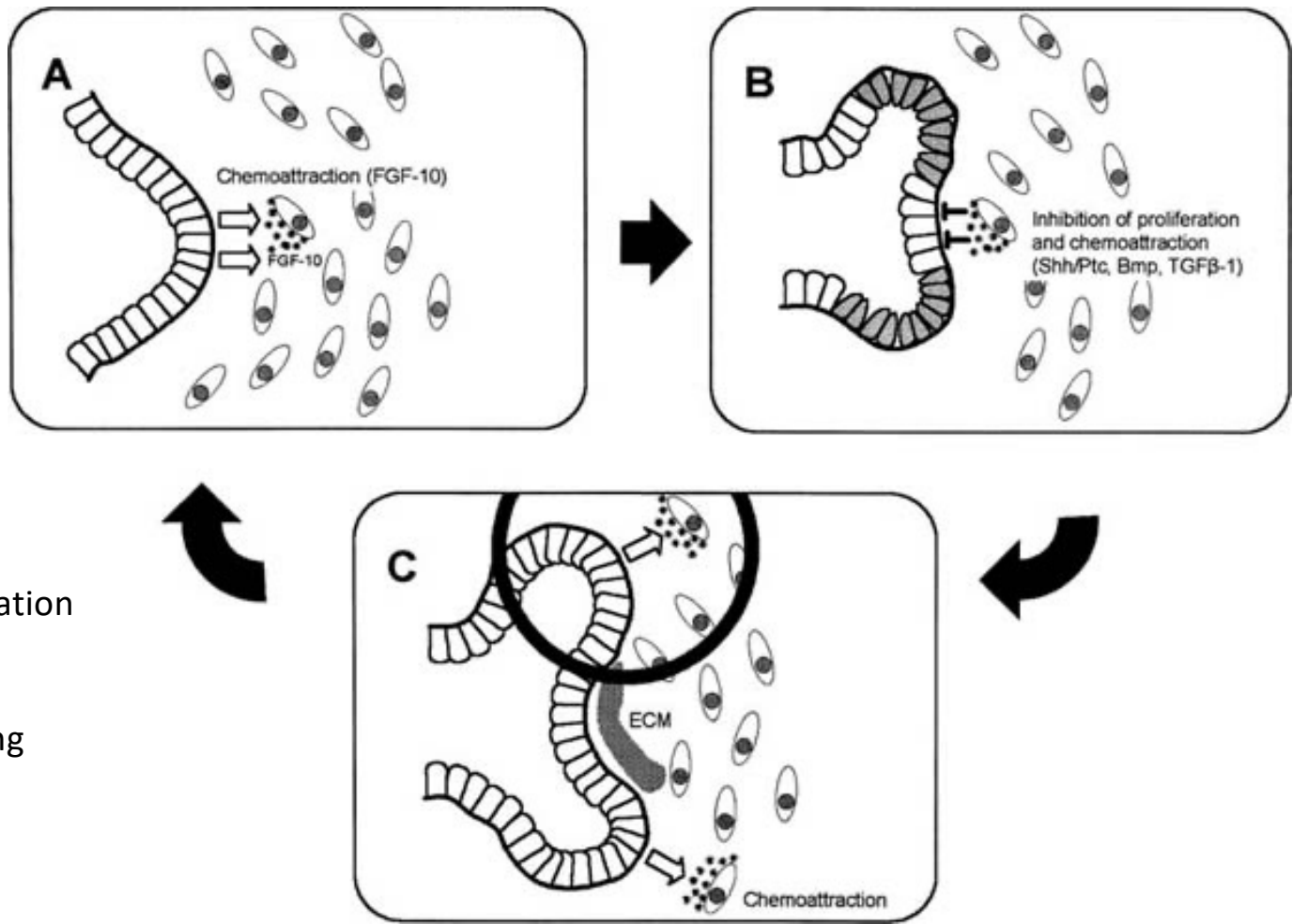


Bronchiole



A plastic cast showing that the pulmonary arteries (red) accompany the airways (white) and that pulmonary veins (blue) are separate.





Schematic model for reiterating bud formation during branching morphogenesis in the developing lung